

- **CONVERTIBLE TOP—INADEQUATE RETENTION OR DISLODGING OF THE TOP SIDE RETAINER**
- **CONVERTIBLE TOP—SIDES OF TOP LOOSE OR “BLOWS OUT”**

**Article No.
91-21-1**

MERCURY: 1991 CAPRI

ISSUE

The convertible top sides may appear to be loose or “blown out”. This is caused by inadequate retention or dislodging of the convertible top side retainer.

ACTION

Modify and adjust the side retainer by using the following service procedure.

SIDE TENSION WIRE ADJUSTMENT PROCEDURE

1. Raise the rear of the convertible top, Figure 1. Refer to the Owner Guide for detailed procedures.

NOTE

THE FOLLOWING STEPS APPLY TO BOTH SIDES OF THE VEHICLE AND ENABLE FURTHER TIGHTENING OF THE SIDE TENSION WIRE.

2. Use a knife to cut 5mm of material away from the end of the retainer, immediately behind the cable pivot, Figures 2 and 3.

CAUTION

BE CAREFUL NOT TO CUT THE CONVERTIBLE TOP MATERIAL SEWN TO THE SIDE RETAINER.

3. Remove the “B” pillar weatherstrip.
4. Remove the lower section of the trim flap from the “B” pillar frame.
5. Tighten the side tension wire as necessary by adjusting the nut, Figure 3. By heating the nut with a soldering iron for a few moments, the Loctite will release on the threads of the side tension wire.

CAUTION

WHEN TIGHTENING THE NUT, IT IS POSSIBLE THAT THE SIDE TENSION WIRE MAY BREAK.

THIS WILL REQUIRE THAT THE NUT (V830126S36C) AND SIDE TENSION WIRE (E9JY-7652806-A) BE REPLACED. THE PIN CAN BE REUSED. SEE PROCEDURE AFTER STEP #8.

6. Secure the trim flap to the “B” pillar frame with adhesive (E8AZ-19552-A).
7. Install “B” pillar weatherstrip.
8. Raise the convertible top according to the procedures detailed in the Owner Guide.

SIDE TENSION WIRE REPLACEMENT PROCEDURE - IF REQUIRED>

1. Install a new side tension wire (E9JY-7652806-A) and nut (V830126S36C). Refer to the 1991 Capri Shop Manual, Section 47-07 for service details.
2. Tighten the hex head nut until the threaded end of the wire is 3mm short of being flush with the outer edge of the nut, Figure 4.
3. Install the rear retaining pin (E646511S2) using a suitable driver.

PART NUMBER	PART NAME
E9JY-7652806-A	Side Tension Wire
V830126S36C	Nut (Pkg/4)
E646511-S2	Pin (Pkg./10)
E8AZ-19552-A	Adhesive

OTHER APPLICABLE ARTICLES: NONE
WARRANTY STATUS: Eligible Under Basic Warranty Coverage

OPERATION	DESCRIPTION	TIME
912101A	Adjust	0.4 Hrs.
912101B	Replace & Adjust-One	0.5 Hrs.
912101C	Replace & Adjust-Both	0.6 Hrs.

Article No. 91-21-1 Cont'd.

DEALER CODING

BASIC PART NO.

7052806

OASIS CODES: 105000

CONDITION

CODE

07

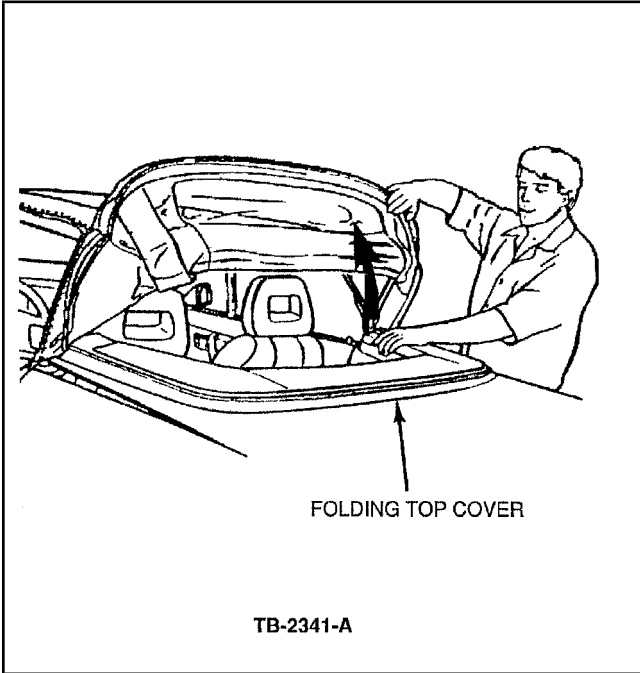


Figure 1 - Article 91-21-1

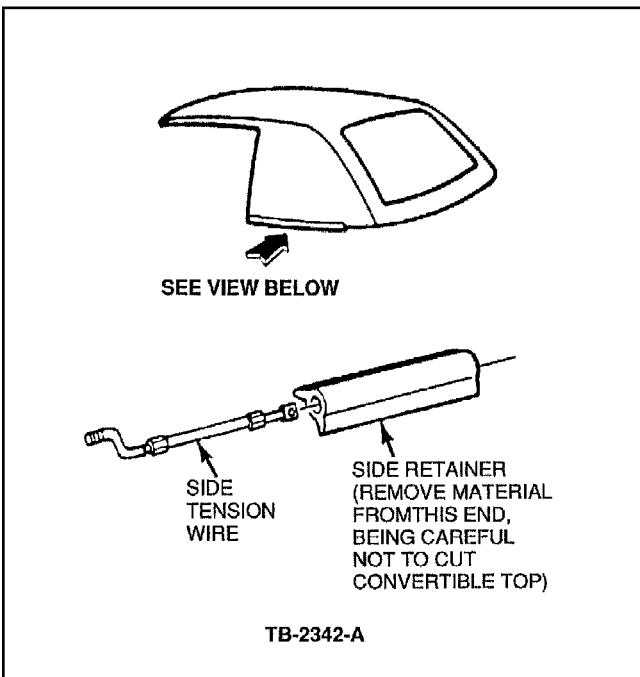


Figure 2 - Article 91-21-1

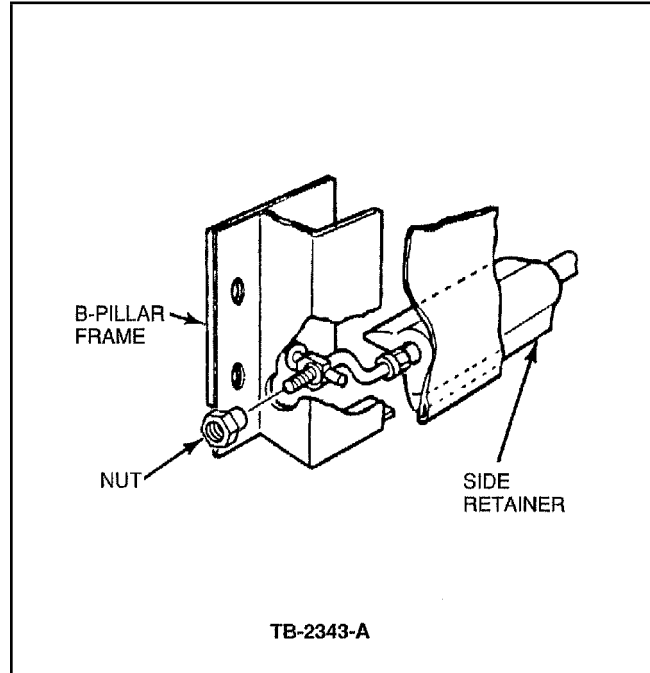


Figure 3 - Article 91-21-1

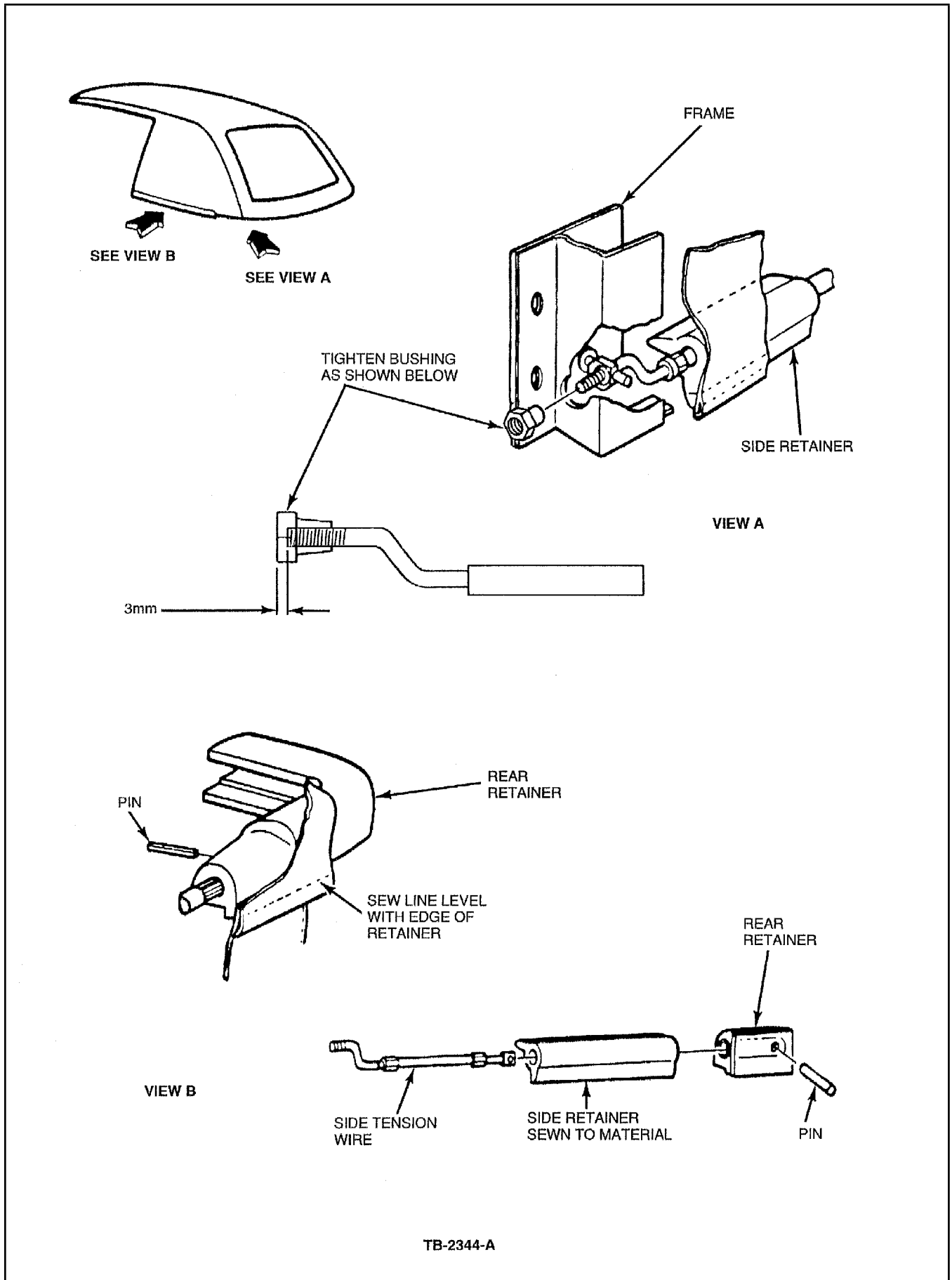


Figure 4 - Article 91-21-1