

MERCURY: 1991 CAPRI**ISSUE**

A stop lamp switch adjustment procedure has been developed for the 1991 Capri.

ACTION

Adjust the stop lamp switch by using the following service procedure.

INSPECTION PROCEDURE

1. Check to be sure that the brake pedal is fully returned. Be sure that the brake booster pushrod is against the return stop in the brake booster.
2. Using a 2.0mm spacer, check the distance between the stop lamp switch and the brake pedal rubber pad. Adjust as required, see Figure 1.

ADJUSTMENT PROCEDURE

1. Disconnect the stop lamp switch wiring connector.
2. Loosen the switch locknut.

3. Check the distance from the brake pedal to the stop lamp switch screw. It should be 2.0mm (0.078").
4. If necessary, adjust the distance by rotating the switch.
5. Tighten the switch locknut.
6. Connect the wiring connector.
7. Check the operation of the stop lamp switch and stop lamps.

OTHER APPLICABLE ARTICLES: None**WARRANTY STATUS:** Eligible Under Basic
Warranty Coverage

OPERATION	DESCRIPTION	TIME	CONDITION
910209A	Adjust Switch	0.3 Hr.	CODE 07
DEALER CODING			
BASIC PART NO. 13480			
OASIS CODES: 201000, 201200, 203000			

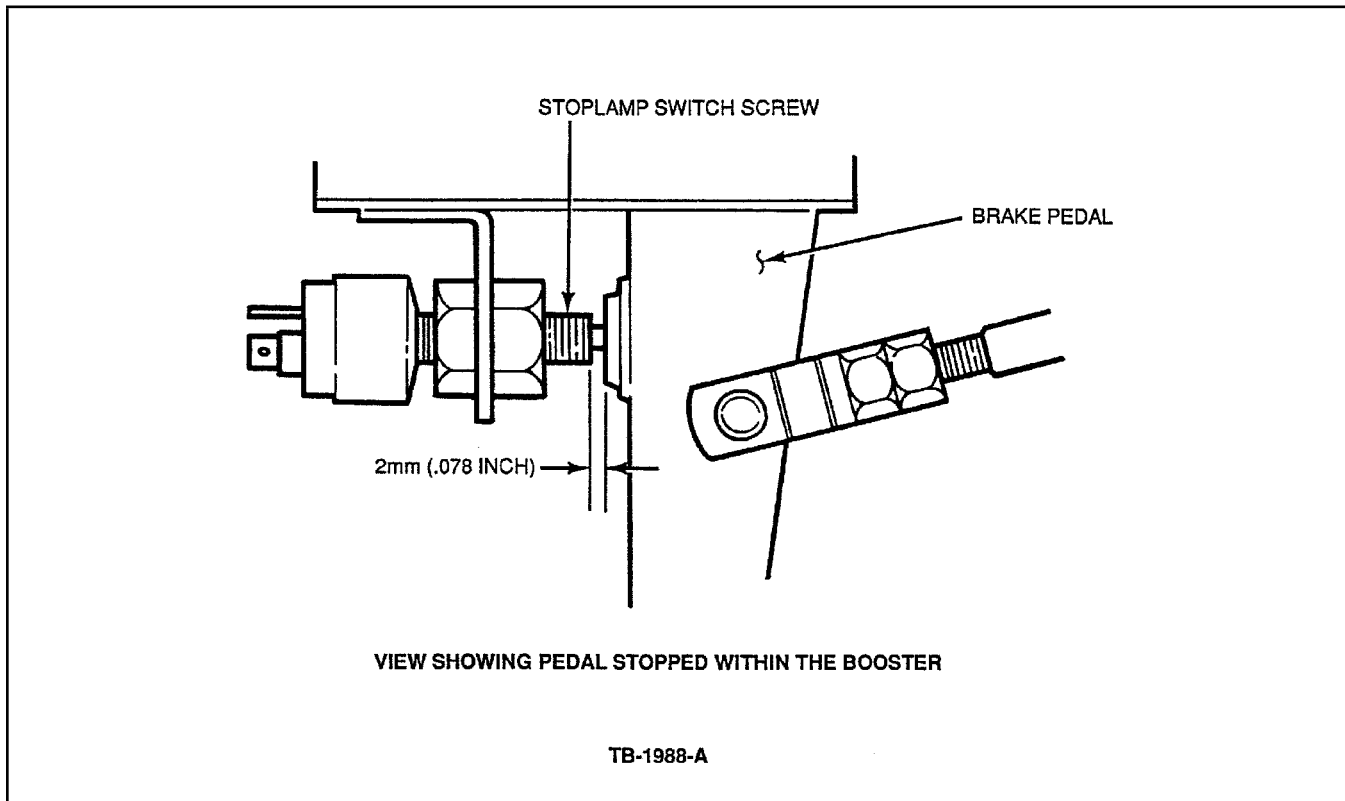


Figure 1 - Article 91-2-9